



NAME \_\_\_\_\_ DATE \_\_\_\_\_

## USE OF 'BE' FORM VERBS IN PAST TENSE

A verb in past tense refers to past time.

1. 'Was' is singular verb form used with 'I', 'He', 'She' and 'It' in the past tense.
2. 'Were' is plural verb form used with 'We', 'You' and 'They' in the past tense.

Tick (✓) the correct word to fill in the space provided.

- 1) Who was sleeping in my bed? It \_\_\_\_\_ Rover. [was/were]



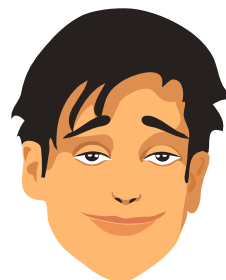
- 2) When he was young, Arthur \_\_\_\_\_ not friendly with others. [was/were]



- 3) We \_\_\_\_\_ in grade 1 last year. [was/were]



- 4) I \_\_\_\_\_ tired yesterday. [was/were]



- 5) You \_\_\_\_\_ in Bombay last week. [was/were]

